



Redline Iia Tele-foul Replacement Foul Sensor  
PN 90019 & 90020  
redlineIia.doc Dec 2005-Mar 2007

## Installation Guide

Congratulations on purchasing a new Redline Iia foul light upgrade.

This foul light is easy to install and will give you many years of reliable service. It uses the same dependable state of the art microprocessor technology as our legendary Redline foul lights.

The Redline Iia will directly replace and Tel-e-foul unit.



The kit consists of,

- a) One Redline IIa foul unit.
- b) Two 1 1/8" round reflectors.
- c) Two reflector brackets.
- d) 12VAC adapter.
- e) 2 #44 6V bayonet light bulbs
- f) #8 X 1/2" mounting screws

### **Installation:**

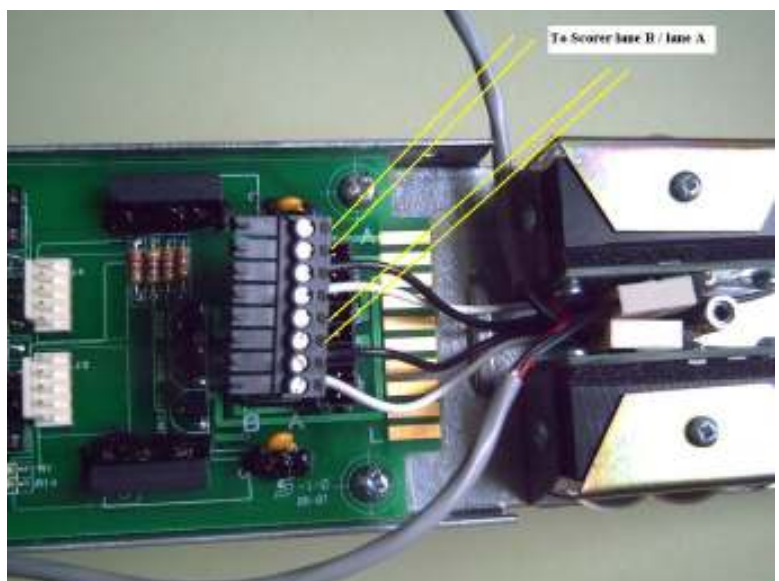
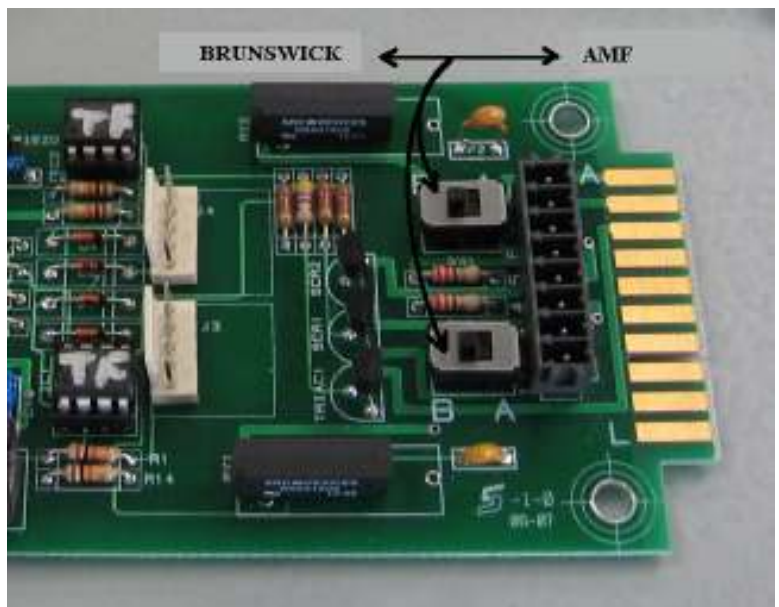
When removing the old foul light, you will find that 115VAC power was supplied with a 3 pin round Cannon style connector. This connector must be replaced with an ordinary household duplex receptacle and box to allow the AC adapter from the new unit to be plugged in.

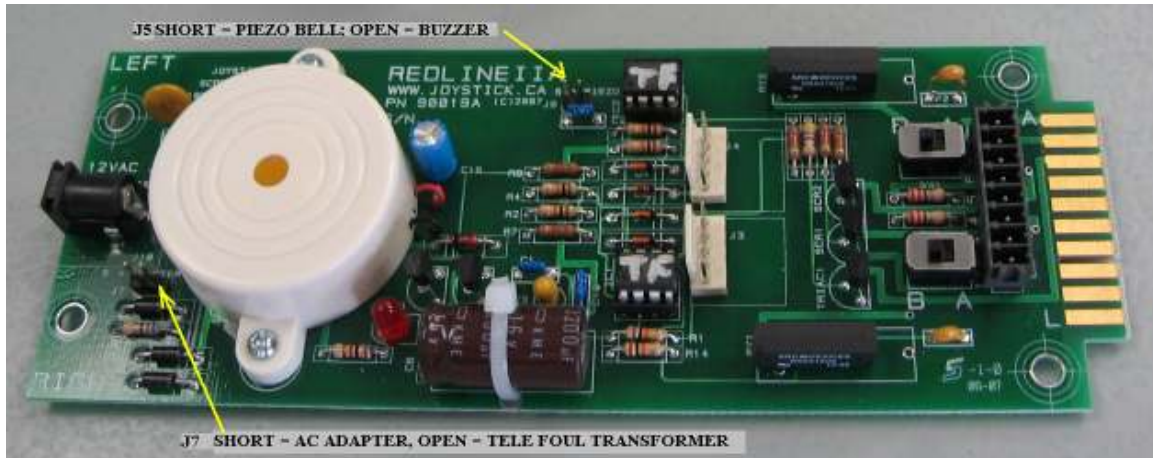
Once this has been done, plug the new AC adapter in to the outlet and then plug the AC adapter output into the jack at the end of the controller board.

If the pinsetters or scoring system was connected to the old foul light, cut the end off of the existing cable, strip back the wire 1/8" and screw them into the lighting screw terminal block. Set the switch according to the scoring system that is connected. In most cases when replacing existing foul lights that were already connected to scoring you will wish to keep it in the "B" (Brunswick) position.

Place the Redline where the old unit was, and screw it down.

Install the reflectors, or inspect & replace the old reflectors on the other side of the lane.





### **Turn it on!**

This is the best part! If everything is correct the red indicator lights will be off. They will turn on when the beam is broken. Check for proper alignment by covering half of the reflector. This will reduce the signal and if the sensor is aimed properly, it will continue to function.

Note the locking nut between the sensors. Loosen this to allow both sensors to swivel horizontally for beam adjustment. Tighten the locking nut when finished. Vertical adjustment is done by simply rotating the sensors up or down by hand. The retaining screws should not need any adjustment.

The red indicator on the sensors should be off unless the beam is broken

Note that you can choose the old foul light buzzer by removing the shunt on J5, or use the piezo bell by leaving it in place.

Once you are satisfied with the beam alignment, make sure all screws are tight, and replace the covers. Take extra care that the wires do not get pinched or caught anywhere.

You are now ready to enjoy your new trouble free Redline II foul light upgrade!